

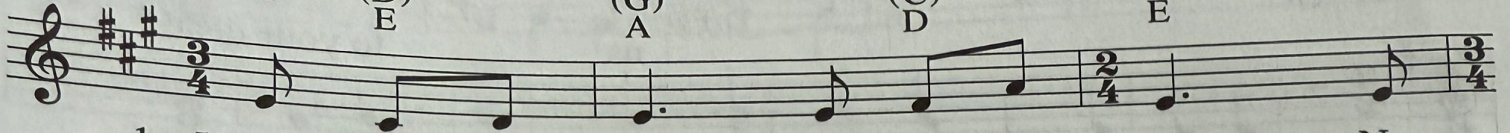
# We Walk by Faith 680

Capo 2: (D)  
E

(G)  
A

(C)  
D

(D)  
E



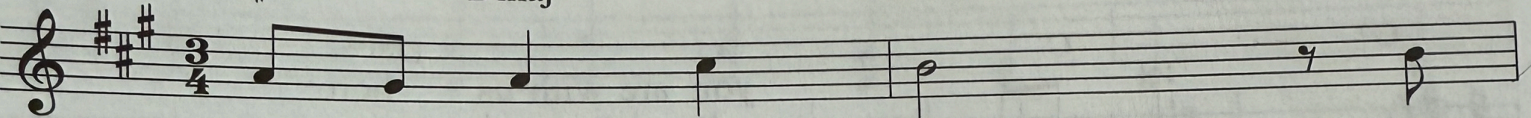
1., 5. We walk by faith, and not by sight; No  
 2. We may not touch his hands and side, Nor  
 3. Help then, O Lord, our un - be - lief; And  
 4. That, when our life of faith is - done, In

(Em)  
F#m

(Cmaj7)  
Dmaj7

(Am7/D)  
Bm7/E

(D)  
E

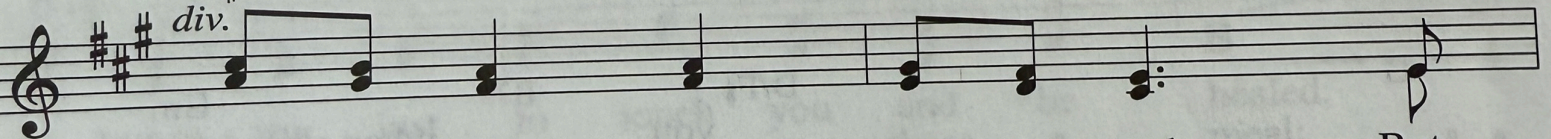


gra - cious words we hear From  
 fol - low where he trod; But  
 may our faith a - bound To  
 realms of clear - er light We

(Em)  
F#m

(Bm7)  
C#m7

*div.*



him who spoke as none e'er spoke; But  
 in his prom - ise we re - joice, And  
 call on you when you are near, And  
 may be - hold you as you are, With

(Am7)  
Bm7

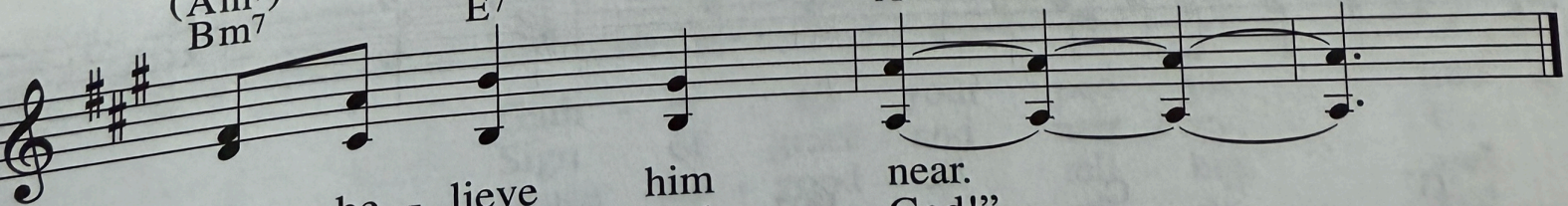
(D7)  
E7

(G)  
A

(C/G)  
D/A

(D)  
E

(G)  
A



we be - lieve him near.  
 cry, "My Lord and God!"  
 seek where you are found:  
 full and end - less sight.